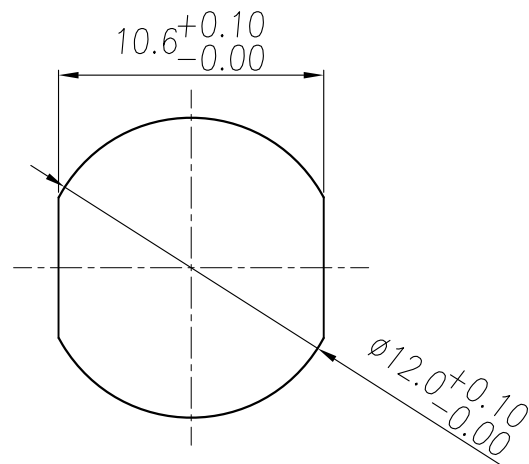
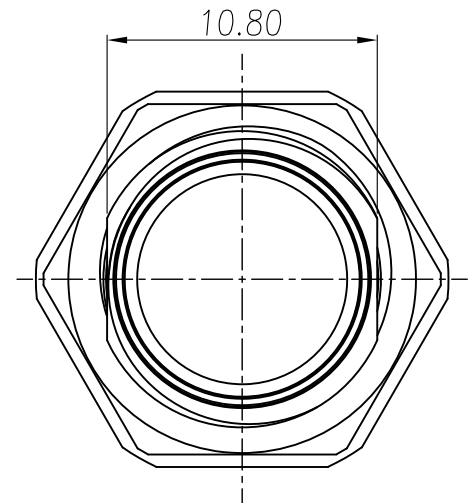
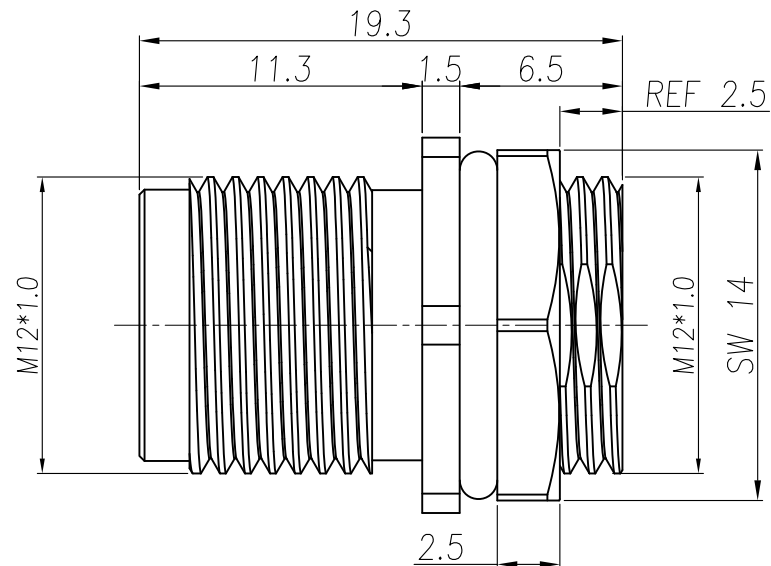
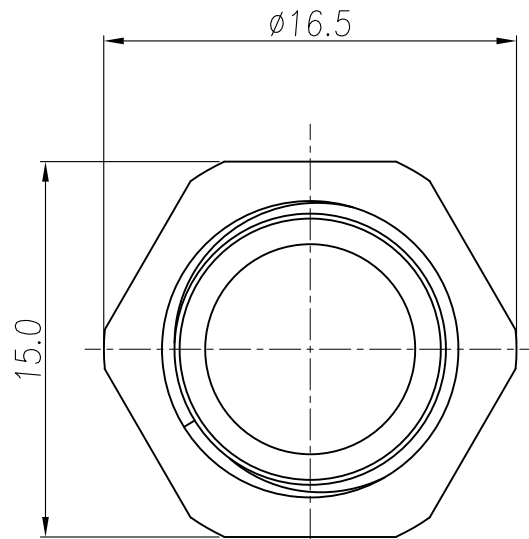


This document is the property of Nian-Yeong Corporation and is delivered on the express condition that it is not to be disclosed, reproduced or used, in whole or in part, for manufacture or sale by anyone other than Nian-Yeong Corporation without its prior consent, and that no right is granted to disclose or to use any information in this document.

CUSTOMER DRAWING

| REV. | DESCRIPTION | APPROVED BY | DATE | ECN NO. |
|------|-------------|-------------|-----------|---------|
| A | RELEASE | LED | 05/06/25* | |
| B | | | | |
| C | | | | |



SHELL+O-RING +NUT

RECOMMEND PANEL CUT-OUT

- MATERIAL :
 - 1-1. SHELL : BRASS
 - 1-2. O-RING : EPDM
 - 1-3. NUT : BRASS
- FINISH :
 - 2-1. SHELL : NICKEL PLATED
 - 2-2. NUT : NICKEL PLATED

| | | | | | | | | | | | | | |
|--------|------------|--------|-----------|-------|-----|--|--|-----------------------------------|----------|---|---------|---------|--------------|
| DRAWN | LED | APPEND | Fido Weng | UNIT | mm | TOLERANCE |    | NIAN YEONG ENTERPRISE 年永實業有限公司 | TITLE | M12 後M12*1.0 Two-piece 洗雙邊 框體(M)(銅管 L=19.3) | | | SHEET |
| CHOKED | Emily Suen | | | SCALE | 1:1 | .x ±0.20 .xx ±0.10 .xxx ±0.05 .xxxx ±0.03 ANGULA ±1° | | | PART NO. | NY-WP2546-11 | DWG NO. | QC11417 | VERSION A |