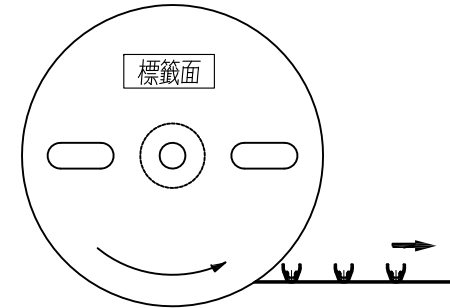
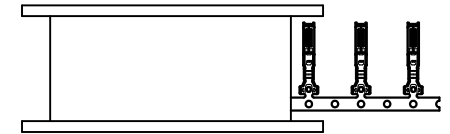
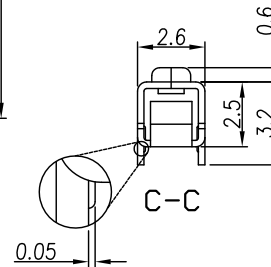
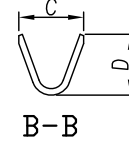
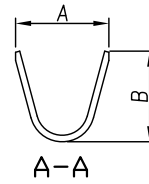
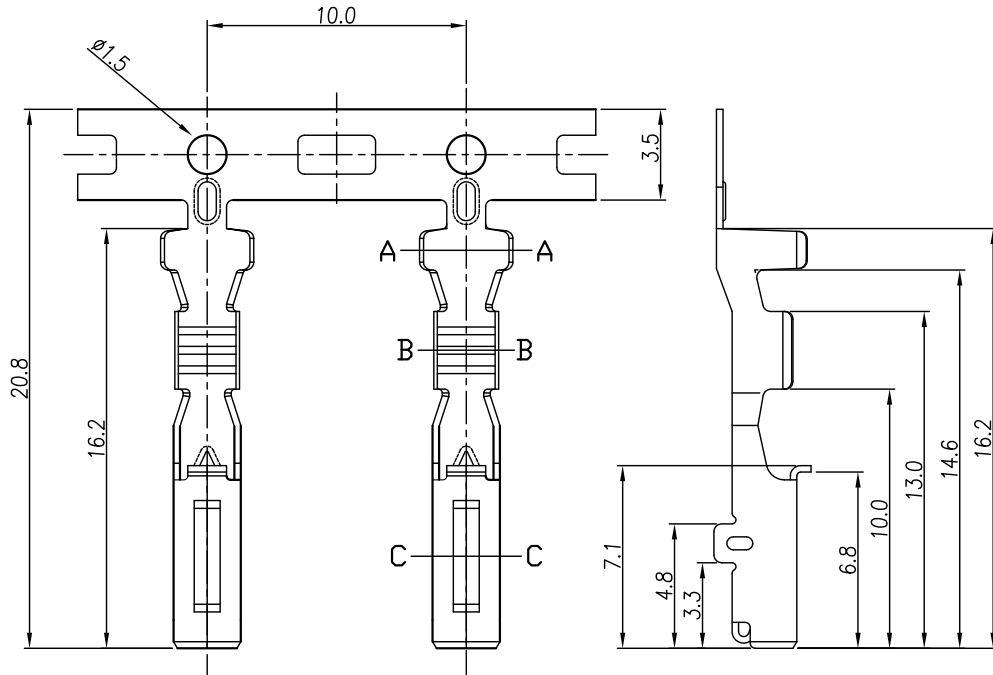


This document is the property of Nian-Yeong Corporation and is delivered on the express condition that it is not to be disclosed, reproduced or used, in whole or in part, for manufacture or sale by anyone other than Nian-Yeong Corporation without its prior consent, and that no right is granted to disclose or to use any information in this document.

CUSTOMER DRAWING

REV.	DESCRIPTION	APPROVED BY	DATE	ECN NO.
A	RELEASE	Yeh Chou	2022/03/28	
B				
C				
D				



PULL OUT DIRECTION

- MATERIAL :
1-1. CONTACT : PHOSPHORUS BRONZE T=0.25mm
- FINISH :
2-1. CONTACT : NICKEL PLATED 100u"(min)

TABLE A

P/N	WIRE AWG	A	B	C	D
OY-TE0551-00	18~22	3.6	3.5	2.5	2.35

DRAWN	Yeh Chou	APPVL	Ku Chou	UNIT	mm	TOLERANCE				TITLE	OBD2 FEMALE CRIMP PIN FOR 18-22AWG			SHEET	1
CHK'D	Emily Suen			SCALE	1:1	.x ±0.20 .xx ±0.15 .xxx ±0.05 .xxxx ±0.01 ANGULA ±1°				PART NO.	SEE TABLE A	DWG NO.	QC10930	VERSION	A

NIAN YEONG ENTERPRISE
年永實業有限公司