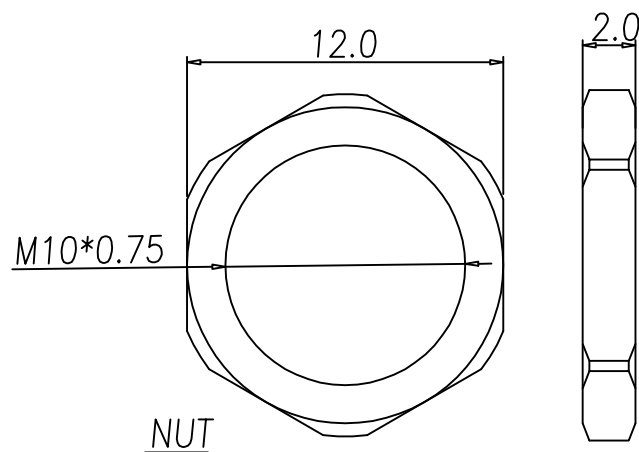
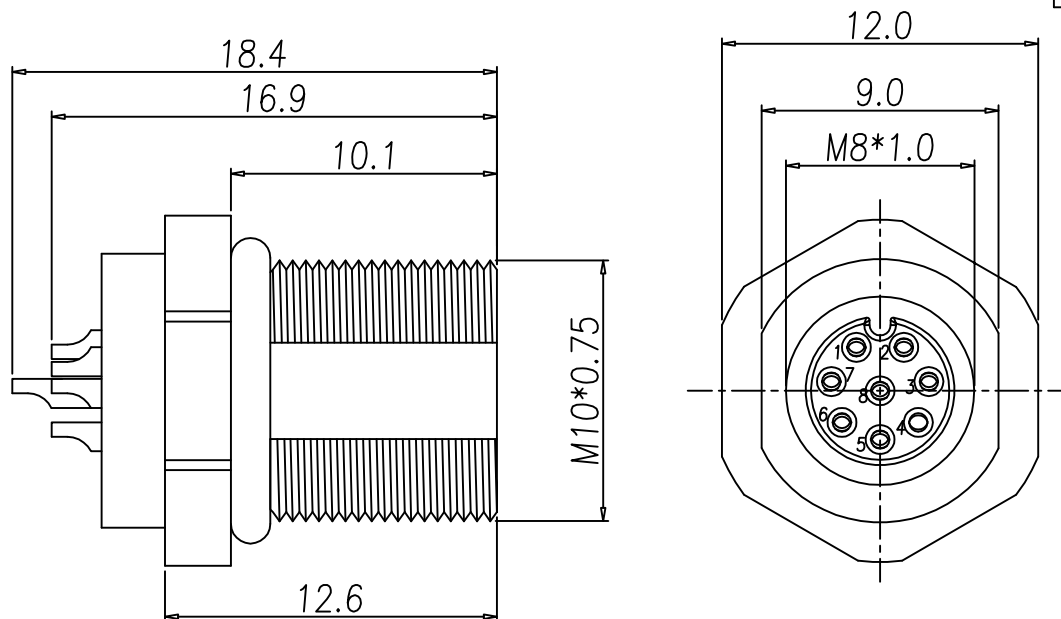


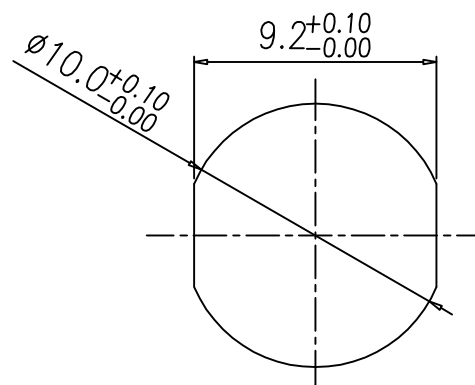
This document is the property of Nian-Yeong Corporation and is delivered on the express condition that it is not to be disclosed, reproduced or used, in whole or in part, for manufacture or sale by anyone other than Nian-Yeong Corporation without its prior consent, and that no right is granted to disclose or to use any information in this document.

CUSTOMER DRAWING

| REV. | DESCRIPTION | APPVL. BY | DATE | ECN NO. |
|------|-------------|-----------|-----------|---------|
| A | RELEASE | Fido Weng | 20/01/17* | |
| B | 修正膠芯材質 | Ku Chou | 03/01/19* | |
| C | | | | |



NUT



RECOMMEND PANEL CUT-OUT

NOTE:

- MATERIAL :
 - 1-1. HOUSING : PA66 UL94V-0 ; COLOR : BLACK
 - 1-2. CONTACT : BRASS.
 - 1-3. SHELL : BRASS.
 - 1-4. NUT : BRASS.
 - 1-5. O-RING : EPDM ; COLOR : BLACK
- FINISH :
 - 2-1. CONTACT : GOLD FLASH.
 - 2-2. SHELL : NICKEL PLATED.
 - 2-3. NUT : NICKEL PLATED.
- ELECTRICAL SPECIFICATION :
 - 3-1. Rated current : 1.5A
 - 3-2. Rated Voltage : 30V
 - 3-3. Water proof : IP67
- Environmental :
 - 4-1. Operation Temperature : -40℃~105℃

| | | | | | | | | | | | | | |
|-------|------------|-------|------------|-------|-----|--|--|-----------------------------------|----------|-------------------|---------|--------|--------------|
| DRAW | Ku Chou | APPVL | Emily Suen | UNIT | mm | TOLERANCE | | NIAN YEONG ENTERPRISE 年永實業有限公司 | TITLE | M8 8pin (F) 前鎖焊線式 | | | SHEET 1/2 |
| CHECK | Emily Suen | | | SCALE | 1:1 | .x ±0.20 .xx ±0.10 .xxx ±0.05 .xxxx ±0.03 ANGULA ±1° | | | PART NO. | WP-08F2-79-11 | DWG NO. | QC7743 | VERSION B |

This document is the property of Nian-Yeong Corporation and is delivered on the express condition that it is not to be disclosed, reproduced or used, in whole or in part, for manufacture or sale by anyone other than Nian-Yeong Corporation without its prior consent, and that no right is granted to disclose or to use any information in this document.

CUSTOMER DRAWING

| REV. | DESCRIPTION | APPVL. BY | DATE | ECN NO. |
|------|-------------|-----------|-----------|---------|
| A | RELEASE | Fido Weng | 01/09/17* | |
| B | | | | |
| C | | | | |

步驟一:

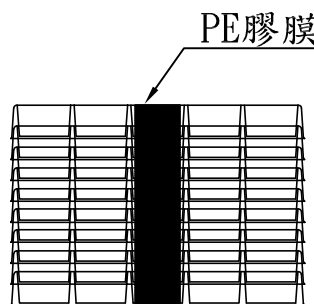
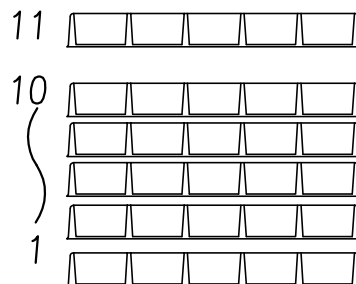
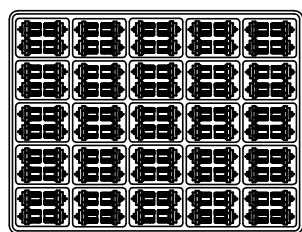
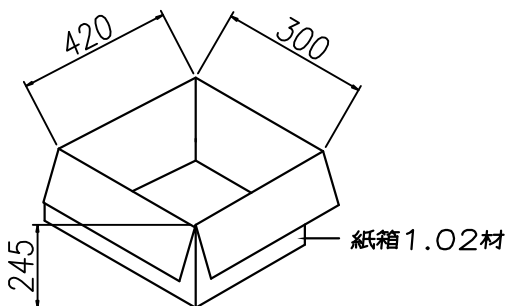
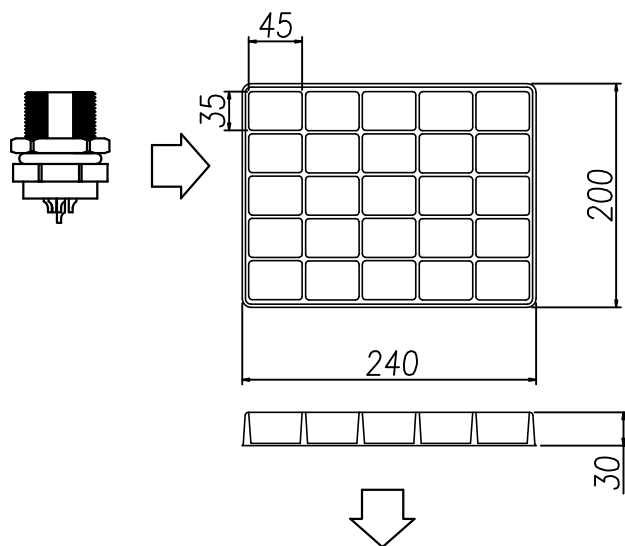
1. 將成品一一放入包裝盤內, 1格4PCS
2. 包裝方式, 如圖所示.
3. 一個包裝盤100pcs.
4. 裝滿盤後堆層至10盤止, 最上層為空盤做蓋子(共11盤)
5. 層疊11盤後, 在以膠膜固定

步驟二:

1. 一個紙箱可以裝20個包裝盤.
2. 每盤100pcs, 每箱2000pcs.
3. 將包裝盤放紙箱中, 後封箱.

步驟三:

1. 用膠帶將紙箱封實.
2. 將標籤貼於紙箱上.



實際層疊(含上層蓋為11層)

ITEM NO:
QTY: PGS
N. W. : KG
G. W. : KG
MEAS:

標籤處

C/NO. :

NOTE:

1. 若有未裝滿之零數箱, 必須以緩衝材塞滿.
2. 在搬運過程中要輕拿輕放.
3. 載運輸中不可堆放過多, 不可有重壓現象.
4. PE膠膜纏繞時不可緊綁.
5. 紙箱內層需裝防水袋.
6. 不足2000PCS, 另行適合包裝方式

| | | | | | | | | | | | | |
|-----------------------------------|------------|-------|------------|-------|-----|--|--|-----------|-------------------|---------|--------|-------|
| DRAW | Ren | APPVL | Emily Suen | UNIT | mm | TOLERANCE | | TITLE | M8 8pin (F) 前鎖焊線式 | | | SHEET |
| CHECK | Emily Suen | | | SCALE | 1:1 | .x ±0.20 .xx ±0.10 .xxx ±0.05 .xxxx ±0.03 ANGULA ±1° | | PART NO. | WP-08F2-79-11 | DWG NO. | QC7743 | 2/2 |
| NIAN YEONG ENTERPRISE 年永實業有限公司 | | | | | | | | VERSION A | | | | |